



No Stripping
or waxing-recoating needed!
with
WARRANTY

One High-Tech sealing with ceramic components



VCT



why WEARMAX®?

WEARMAX® allows you to reduce the cost of daily floor care and maintenance with savings in labor and cleaning materials. WEARMAX® will increase the life span of of any floor substrate tremendously! The long-lasting clean appearance of your floors coated with the WEARMAX® System will improve the image of your company as well as the motivation of your employees.

WEARMAX® customers are to be found in every area of business - commercial, industrial and the public sector.

The principle is simple: the larger the coated surface area, the higher the potential savings. However, significant savings can be made even in small areas!!

5 years against wear through in commercial areas
10 years against wear through in hospital, clinic

*Excludes mechanical damage, abuse and incorrect professional application by a certified WEARMAX®

Extreme exposed and public areas

www.kragilinc.com

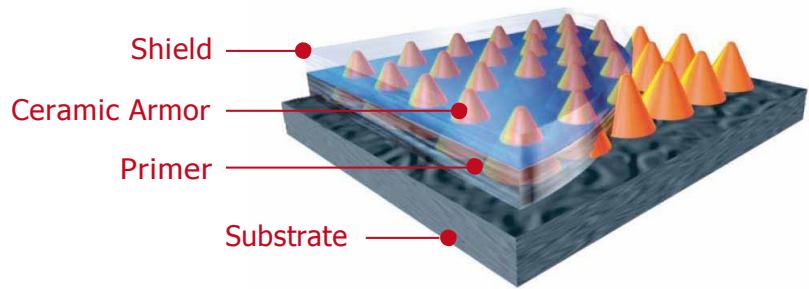


technical

Technical Explanation of WEARMAX® for VCT

The various components:

1. WEARMAX® Primer (Adhesion Primer)
2. WEARMAX® Armor (Ceramic Layer)
3. WEARMAX® Shield (Top Coat)



Up to **10 YEARS WARRANTY**

as
, health care & nursing areas *)
*) valid for projects from 2012
application. The Precondition is a
Teampartner or contractor.

WEARMAX® is a multiple Coat-System. This new and unique ceramic coating system is also suitable for vinyl, linoleum, synthetic and natural rubber when applied according to the instructions and recommendations of the manufacturer.

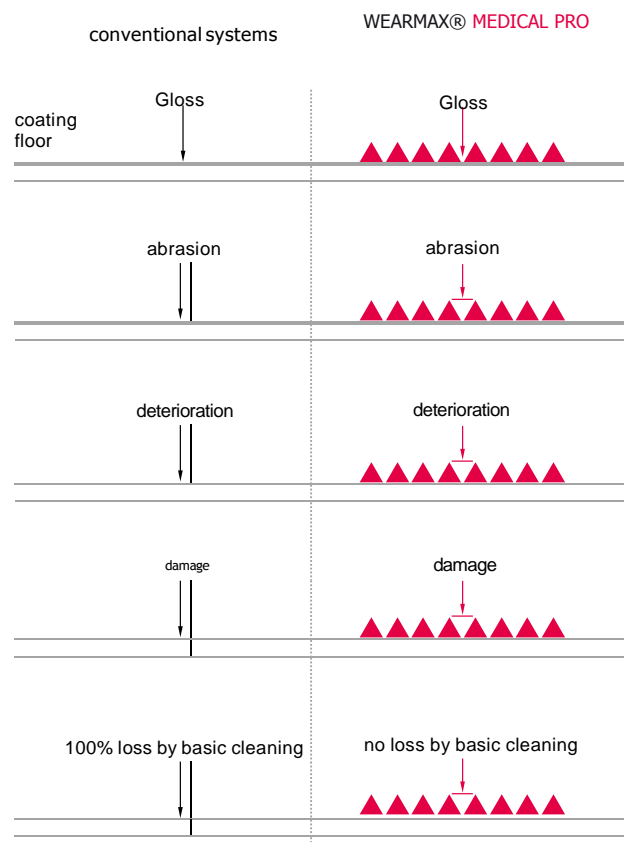
A Pre - Condition for the application and purchase of our coating systems is a WEARMAX Team Partner Training and certification by our company or one of our certified Trainers. No material will be supplied to non-certified companies or individuals.

Purpose and functionality of the individual layers

1. WEARMAX® Primer is specially formulated to generate adhesion on the substrates mentioned above.

2. WEARMAX® Armor contains ceramics and provides the actual main wear-layer. The ceramic used in WEARMAX® Armor performs with a hardness of 9.2 – 9.4 (natural diamond = 10). The entire system is formulated to allow the individual ceramic particles to protrude through the final surface, generating an extremely hard and enduring protection against daily wear and tear. Due to the dense and even particle distribution across the entire surface excellent protection of the coated surface is achieved as well as excellent traction due to the fine roughness generated by the exposed ceramic particles. Excellent traction is provided even on damp and/or wet surfaces.

3. WEARMAX® Shield provides the top coat that generates certain gloss values and protection of the Armor coat against dirt and soils. This product performs with excellent resistance against diluted acids and alkaline substances. Cross-Linker cleaning plus the individual layers allows these individual layers to bind together and enhance the chemical and stain resistance of the finished surface.



Product benefits

- High abrasion resistance - provided by up to 120 million ceramic particles per sqm.
WEARMAX® provides a highly effective protection against dirt, scratches and traffic patterns.

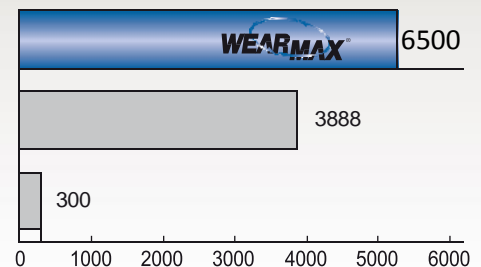
Warranty: 5 year warranty against wear through to the substrate for commercial areas.
10 year warranty against wear through hospitals, clinic, health care & nursing homes *)

* valid for projects from 2012

- Ready to use surface without additional treatment / waxing
- No polishing
- Huge cost savings, as ongoing thorough cleaning becomes obsolete.
- Very high Gloss retention.
- Increased slip resistance
- Warranty
- Environmentally safe - water based - low VOC Content
- No odor during application
- European Fire rating Dfl-s1
- Resistant to Disinfectants (positive list will be provided upon request info@kragilinc.com)
- WEARMAX® can be removed completely if necessary
- WEARMAX® can work with any type of soil sealing (coating) are revised

Abrasion resistance by comparison

- WEARMAX® 1 High-tech sealing with ceramic components wear through occurs after rough 6500 cycles Taber CS 10 (if applied to VCT Factory UV cured Austrian Hardwood flooring manufacturer wear through occurs after 3888 cycles Taber CS 10



- Polyurethane / Acrylate dispersion closest competitor wear through occurs after 300 cycles Taber CS 10

Cleaning benefits

- No need for periodic stripping / complete removal of floor finish
- No maintenance by using wax or other gloss generating chemicals
(this would be the positive features of „overlap“)
- No polishing
- easy sweeping & daily cleaning
- Mechanical cleaning possible to remove tough stains

Cleaning instruction

These cleaning instructions are valid for all areas treated/coated with WEARMAX® ceramic system. Any additional treatments (like waxing and polishing) are unnecessary. WEARMAX® coated floors will not require additional protection.

Regular Cleaning / Maintenance Cleaning:

We recommend cleaning WEARMAX® as appropriate, with a residue-free ph-neutral detergent.

Note: Cleaning effort required may vary depending on degree of dirt accumulation. Soil, especially in granular structure has an increased abrasive effect on all surfaces. To protect the WEARMAX® Coating system, please install sufficient sized walk off mats in all entrance areas.

Please install suitable soft plastic or felt pads to any table and chair legs to avoid serious scratching and/or gauging caused by sharp metal edges.

Where wheel chairs or other similar equipment is in use please ensure that they are equipped with standardized, non-staining castors according to DIN 68131.

Mechanical damage caused by improper use and/or abuse is excluded from the warranty.

IMPORTANT - No initial treatment:

Please do not treat WearMax with any restore agent or chemical that will leave a residue. This will cover and hide the positive characteristics of WEARMAX® and void the warranty.

The WEARMAX® coated floors require no additional protection.

the target groups

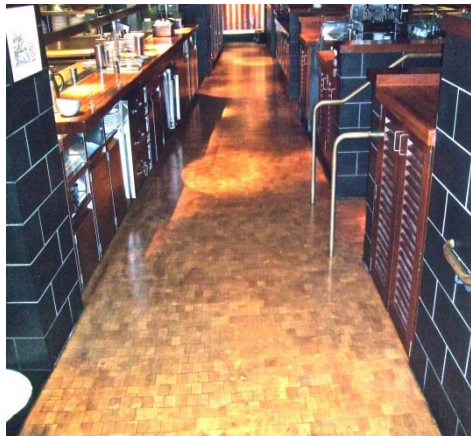
We offer an individual WEARMAX® floor coating system, for every substrate and application.

We distinguish between

EXPRESS, **MEDICAL PRO** and **WOOD**.

shops / offices / extreme exposed areas

EXPRESS



hospitals, clinic, health care & nursing homes

MEDICAL PRO



high traffic areas and public areas

WOOD



